

Datenbanken

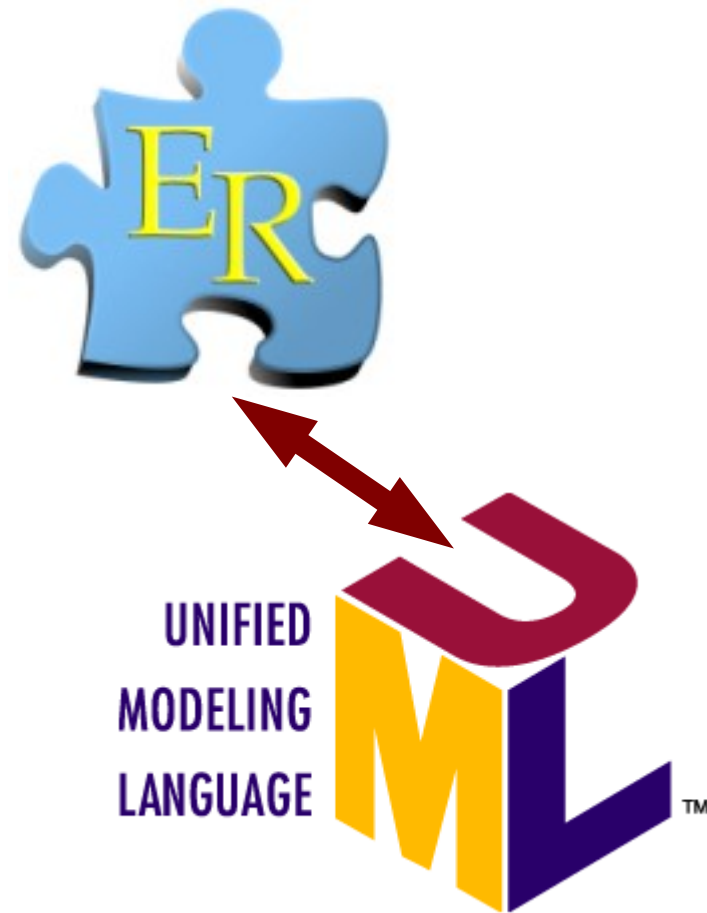
Teil2: Informationen

Kapitel 6: Objektorientierte Sicht

ER-Modell und UML

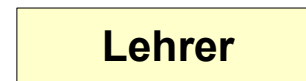
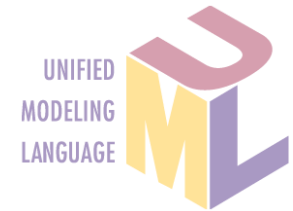
ER-Modelle als UML-Klassendiagramme darstellen

1. Klasse
2. Klasse mit Merkmalen
3. Beziehung
4. Beziehung mit Beziehungsmerkmal
5. Generalisierung / Spezialisierung



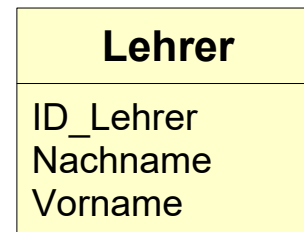
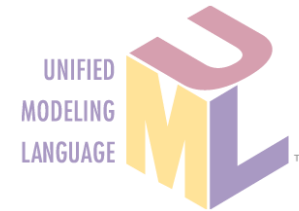
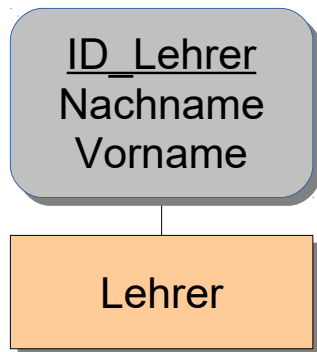
ER-Diagramm in UML Darstellung

Klasse



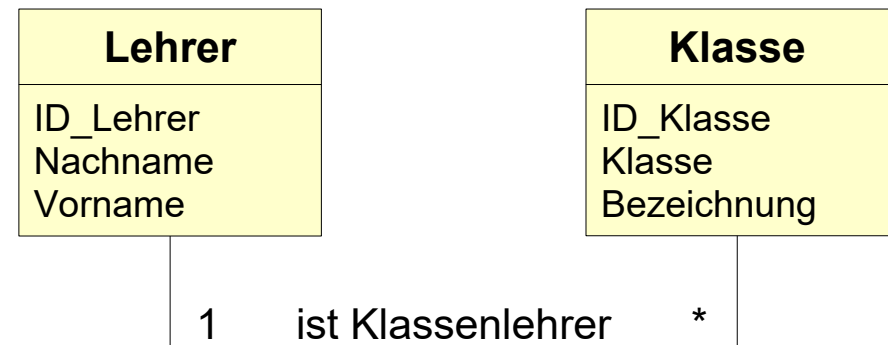
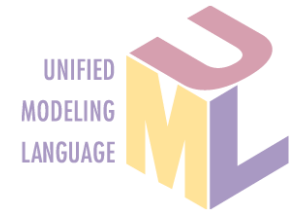
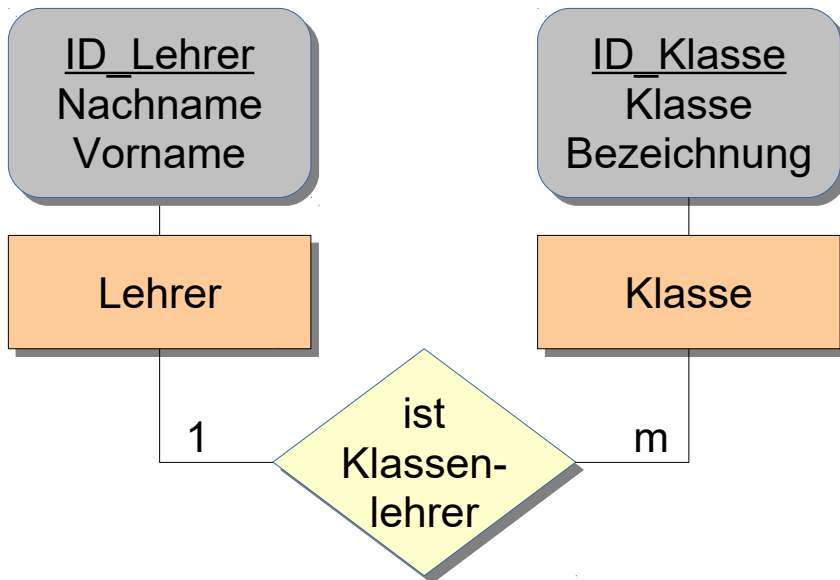
ER-Diagramm in UML Darstellung

Klasse mit Merkmalen



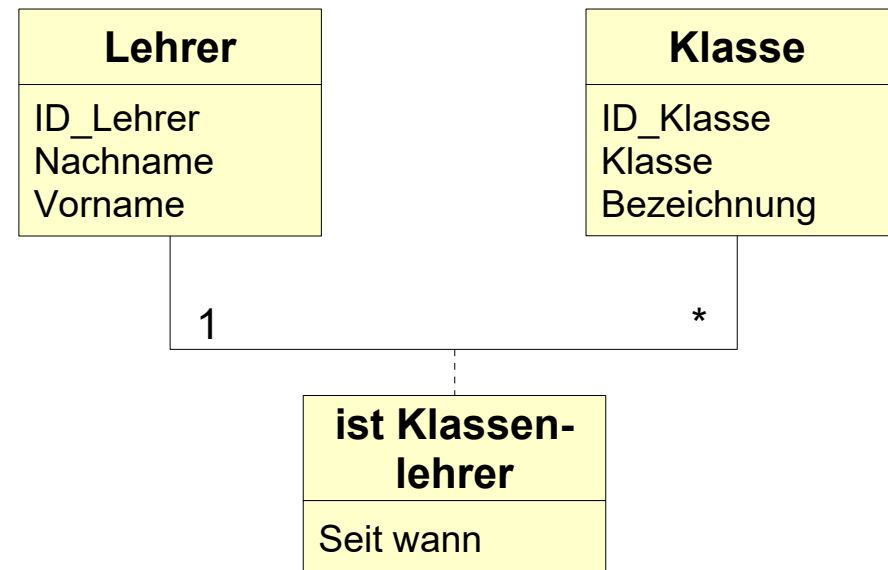
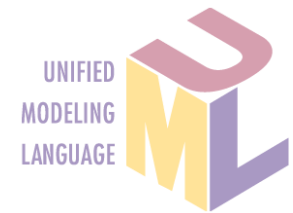
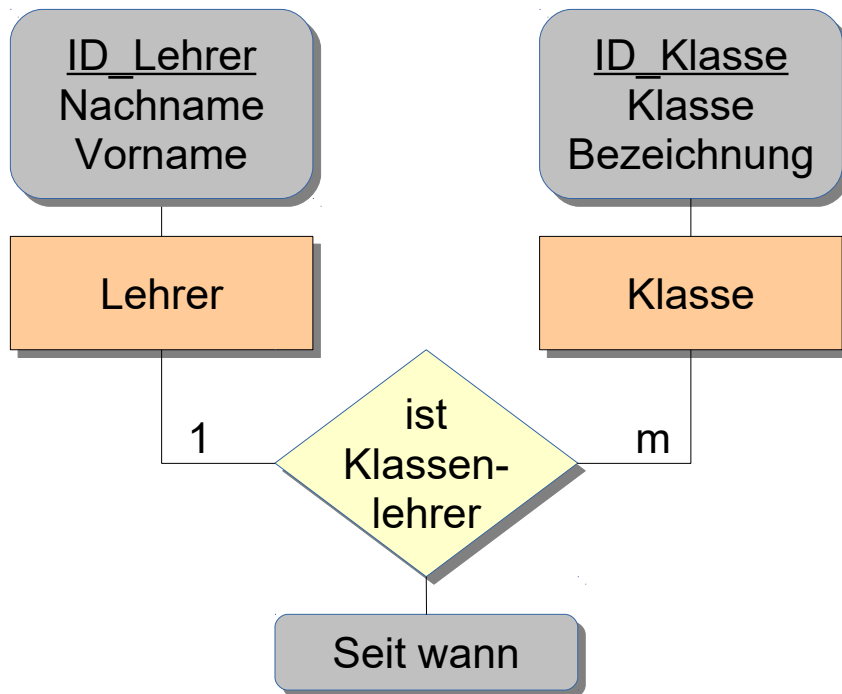
ER-Diagramm in UML Darstellung

Beziehung



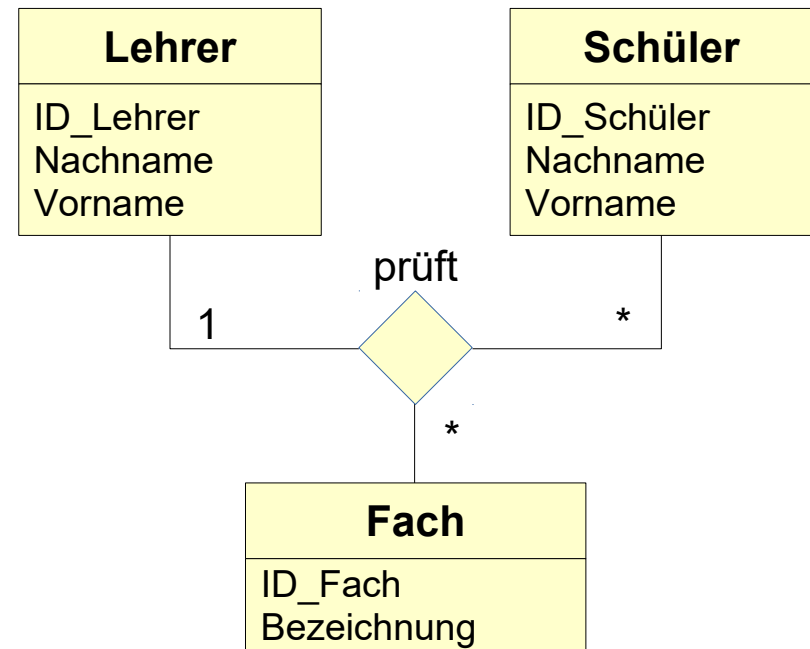
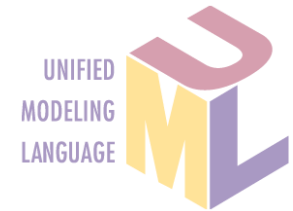
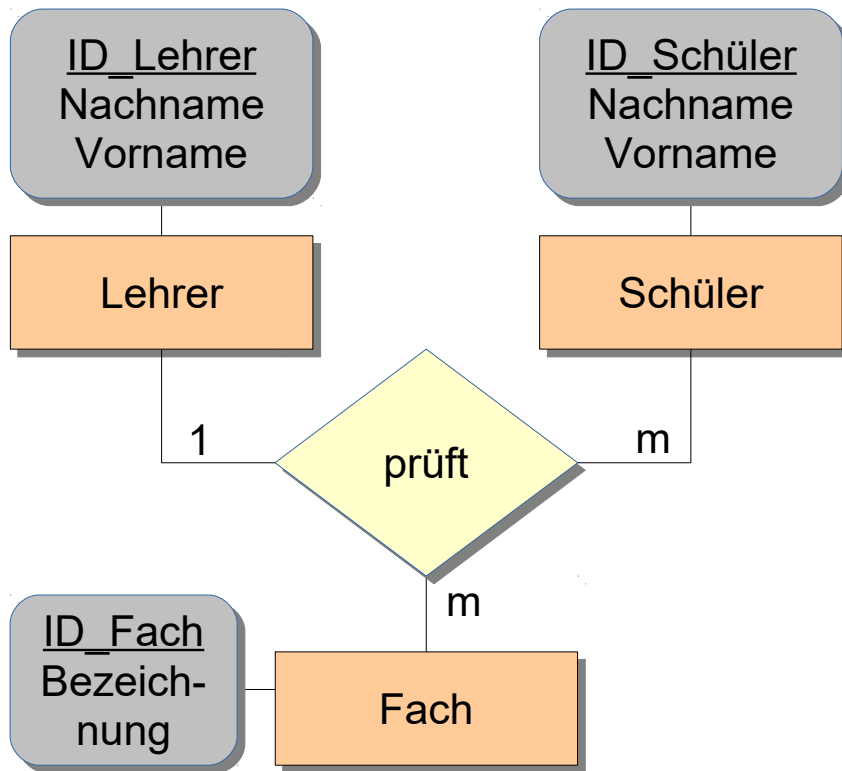
ER-Diagramm in UML Darstellung

Beziehung mit Beziehungsmerkmal



ER-Diagramm in UML Darstellung

Mehrfachbeziehung



ER-Diagramm in UML Darstellung

Generalisierung / Spezialisierung

